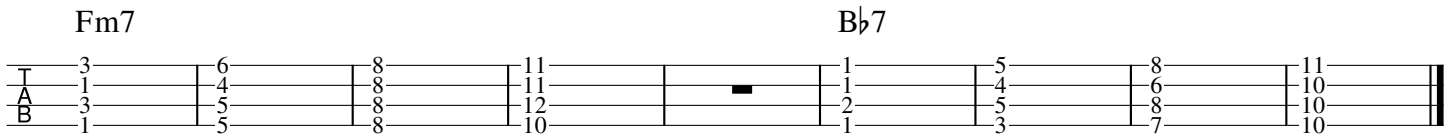


II^m7 - V7 Inversions



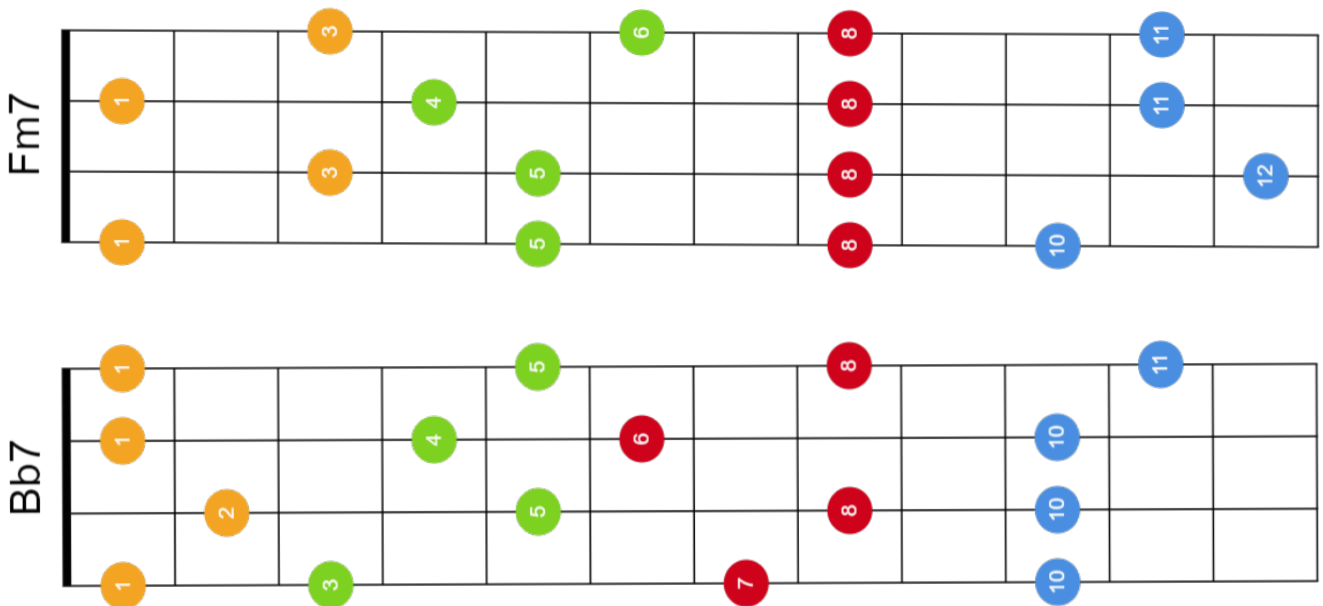
These are the 4 inversions of each chord (or sound environments as I fancy calling it)

First play each environment itself, embrace it, analyse the different top, and bass notes.

Play just the middle strings as you walk up the pattern, experiment with the various sounds you get.

Then use them together as a II-V, a package that goes together to drive you to the tonic chord (Eb in this case).

Remember, this pattern, pack, name it whatever you like, of chords is IDENTICAL for all keys. Learn one and you've learned them all! (For instance for the Dm7 we all know how to play the pattern STARTS on the second inversion... this 2213 chord...same grip with 5546 ..)



Jazzook



Ukulele Nick